

# A.I.R.

## ***Above and Below***

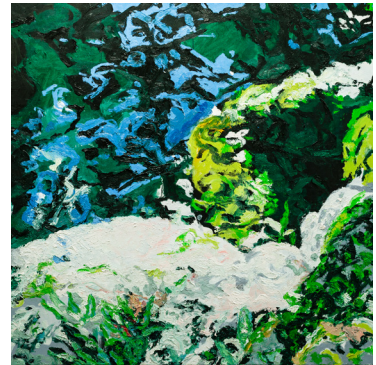
Mimi Oritsky

September 10 – October 10, 2021

Opening Reception: Friday, September 10, 12-6pm

GALLERY II

A.I.R. Gallery is pleased to present *Above and Below*, an exhibition of new paintings by Mimi Oritsky. Comprised of work made since 2018, the show includes a selection of Oritsky's abstracted landscapes that explore atmosphere, light, color, and perception.



Mimi Oritsky, *The Wet Above*, Oil on canvas, 30 x 30 inches

Through painting, Oritsky attempts to capture the fleeting and intangible qualities of light and shadow in the natural landscape. Sketching en plein air, Oritsky translates these momentary atmospheric effects onto a two-dimensional painted surface in the studio, attuned to subtle shifts brought on by the weather or time of day.

Oritsky often works from extreme vantages, having in the past sketched from the flickering bird's-eye view of a light aircraft or helicopter. With *Above and Below* she returns to the ground and human scale, though still with an eye toward atmospheric perspective and the blur of motion, manifested here in brushstrokes of dappled sunlight and rippling water.

Oritsky is interested in what she calls airspace—the fruitful expanse between the eye and its object of focus—in which she finds a mercurial world of color and light. Through this expanse she paints, her works made “a surface marked by the rhythm of the moving air.”

**Mimi Oritsky** received an MFA in Painting and Printmaking from the University of Pennsylvania Graduate School of Fine Arts and a BFA from the Maryland Institute College of Art. Oritsky has received Purchase Awards from the Reading Public Museum and the Pennsylvania Council on the Arts/Arcadia University. She was awarded Residence Fellowships from the Heliker-LaHotan Foundation, the Millay Colony for the Arts, and the Artists for Environment Foundation. Oritsky currently lives and works in Philadelphia, Pennsylvania.

A.I.R. Gallery is wheelchair accessible via ramp. There are accessible toilets in the venue. There is comfortable seating with backs. Free tap water is available. The venue is nearest to the F train at York St (0.2 miles) and the A train at High St (0.5 miles). The nearest wheelchair accessible trains is the B, Q, R at Dekalb Av (1.1 miles) and the 2, 3 at Borough Hall (0.8 miles). The roads immediately surrounding the gallery are cobblestone. The nearest accessible parking garage (for an hourly fee) is two blocks away at 100 Jay St. No ID necessary for entry. Please contact [info@airgallery.org](mailto:info@airgallery.org) for more information.



Council on the Arts



RF SHELLEY & DONALD RUBIN FOUNDATION



NYC Cultural Affairs

A.I.R. GALLERY | 155 Plymouth St. | Brooklyn, NY 11201 | [airgallery.org](http://airgallery.org) | [info@airgallery.org](mailto:info@airgallery.org) | (212) 2556651 | Wed - Sun 12-6pm